



anaglyph

NPL - ANAGLYPH ONE DAY SEMINAR

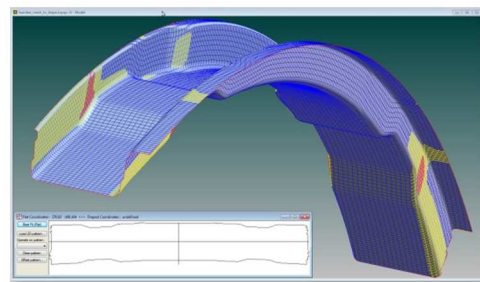
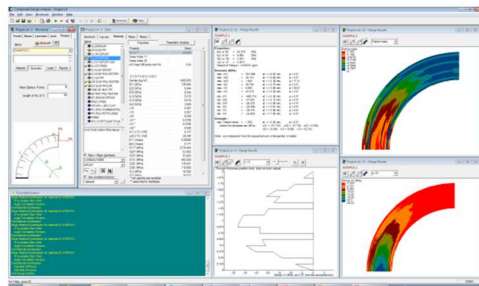
CoDA - LAP

Laminate Tools - PlyMatch™

PROGRAMME

Date: 20 April 2016
Location: National Physical Laboratory (NPL)
Hampton Road
Teddington, Middlesex
TW11 0LW
Contacts: Graham Sims, NPL (07718195431/020 8943 6564)
George Kretsis, Emmanuelle de Posson,
Anaglyph Ltd (020 8987 6056)

09:30-10:00	Welcome – Refreshments
10:00-11:20	CoDA - overview, material synthesis, structural modules
11:20-12:30	LAP - basic functions, advanced options
12:30-13:30	Lunch
13:30-14:30	Laminate Tools - concepts, design and manufacture
14:30-15:15	PlyMatch technology
15:15-16:00	Laminate Tools - FEA postprocessing
16:00-16:30	Tour of NPL laboratories
16:30	Close



See [here](#) for location and transport arrangements.
If arriving by car please allow 15 mins. for registration and parking,
Note: 285 bus to the door from Heathrow airport.